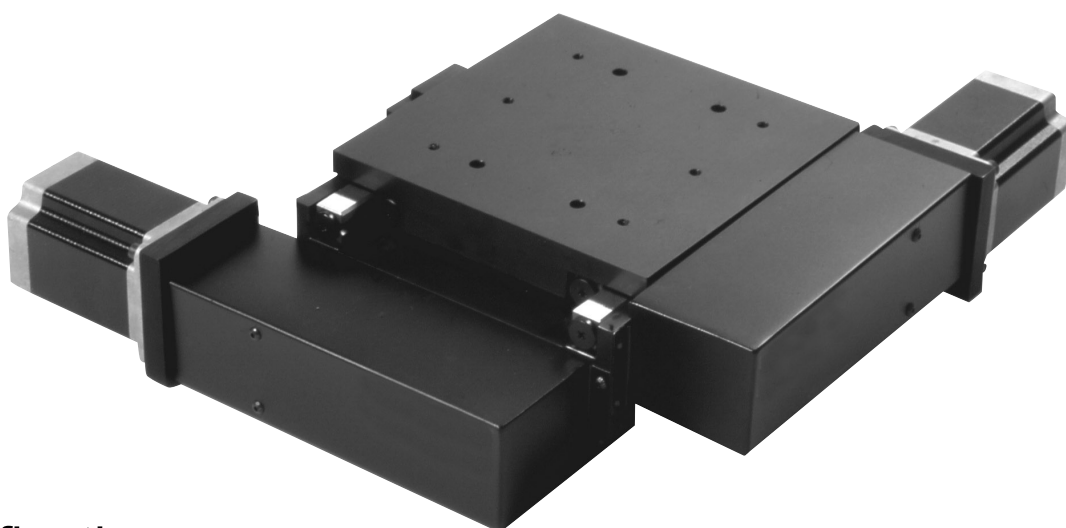


29000 Integral XY

For applications where a lower cost low profile XY stage with good performance is required, the Series 29000 offers a compact design with those characteristics.

Using ground ballscrews or optional leadscrews for economy, this compact XY stage is available in 50x50, 100x100 or 150x150 travels. Stepping motors are standard but servo motors are optional. Crossed roller bearings are used for good stability, within an economical design.

Limit and Datum switches are optional. A linear encoder with integral Limit and Datum switch function can be optionally fitted.



Specification

	Travel mm	50x50	100x100	150x150
Ballscrew Drive	Optional , 1mm, 2mm, 5 mm, Leadscrew, Precision Ground or Rolled Ballscrew			
Accuracy per 25mm travel	TBD	TBD	TBD	
Resolution	1 µm	1 µm	1 µm	
Flatness and Straightness	10 µm	10 µm	12 µm	
Load Capacity (kg)				
Stage Horizontal	40	40	40	
Stage Vertical	20	20	20	
Weight (kg)	7.5	9	11	
Materials	Alumium Alloy and stainless steel			

Options:-

Discrete Limit and Datum switches

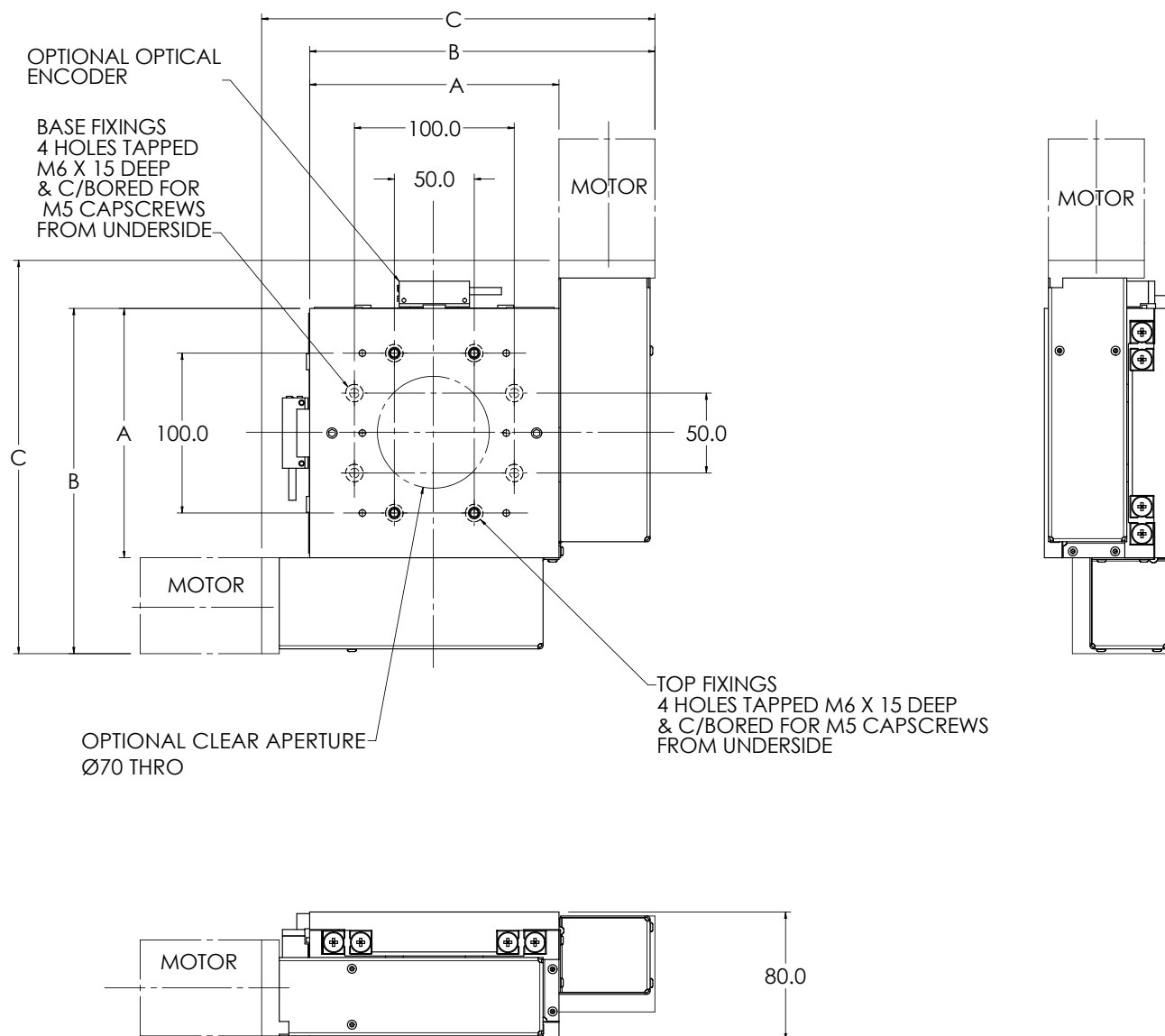
2,4 or 5mm pitch ballscrews

Motor mounted encoder

Clear ø70mm aperture

29000 Series Stage

Dimensional Data



	Dimensions (mm)		
Max Travel (mm)	A	B	C
50 XY	156	217	247
100 XY	206	267	297
150 XY	256	317	347